

Ocean Express

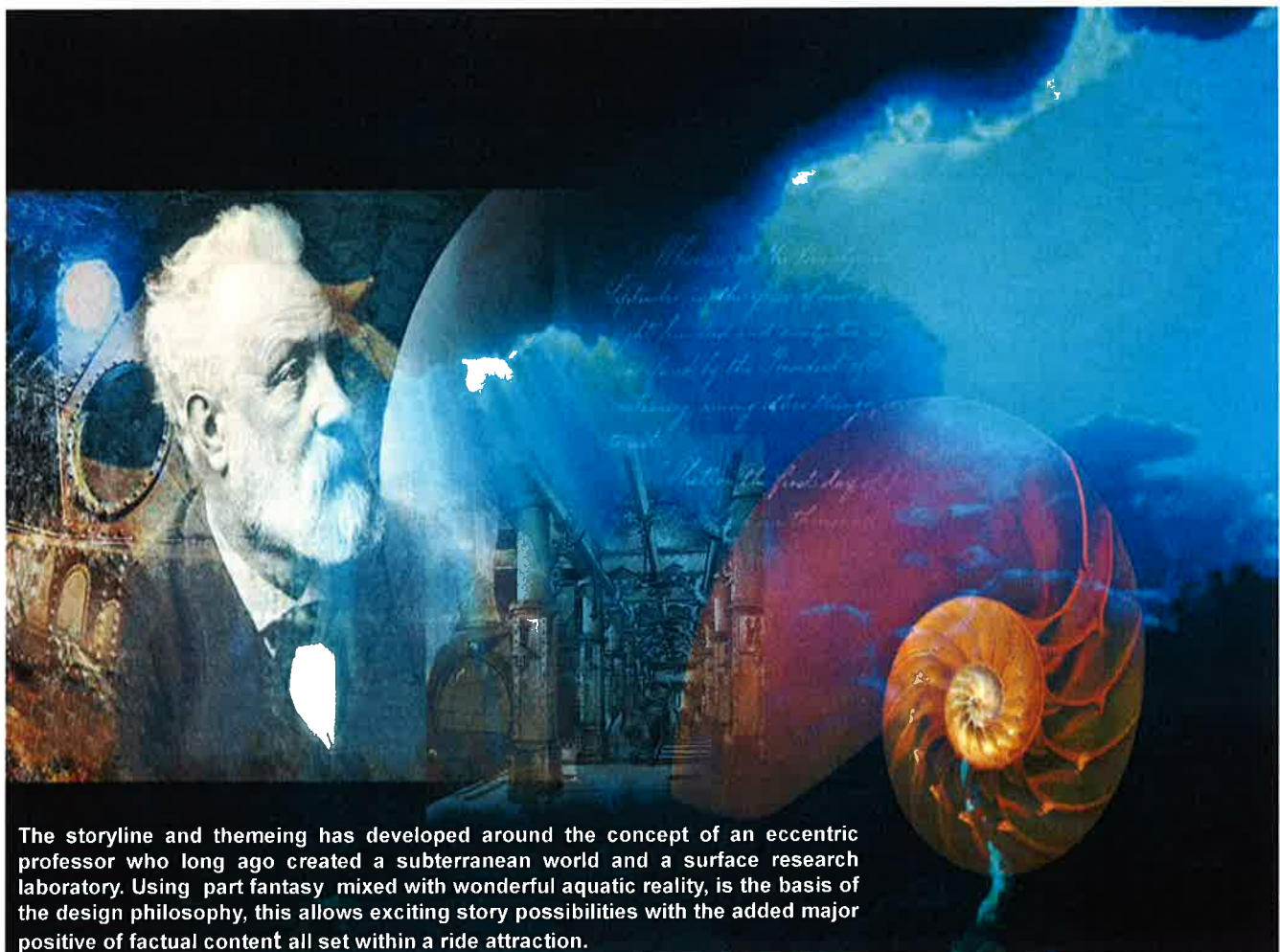


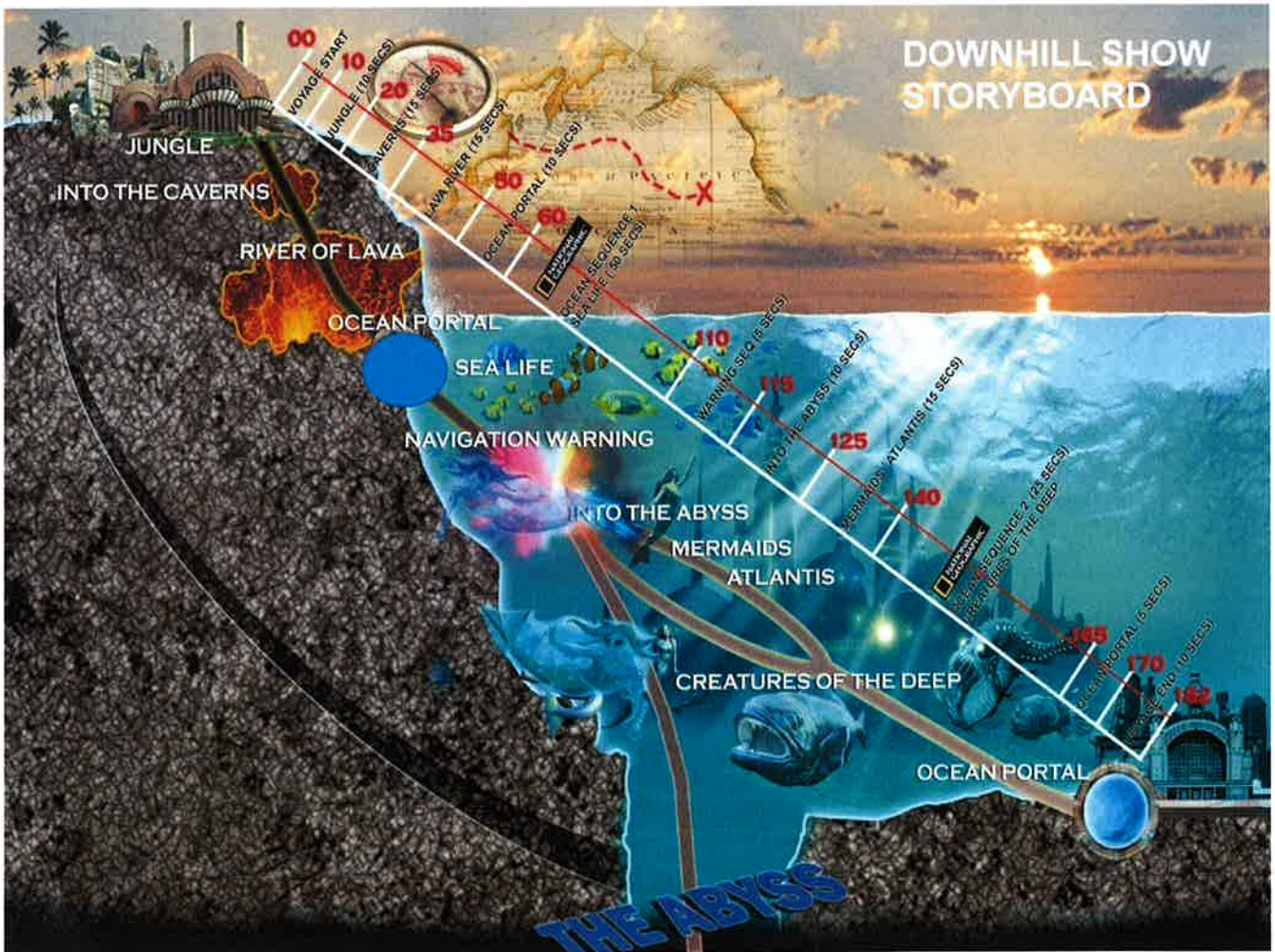
Executive Director of Engineering Division
Ir. George Tso

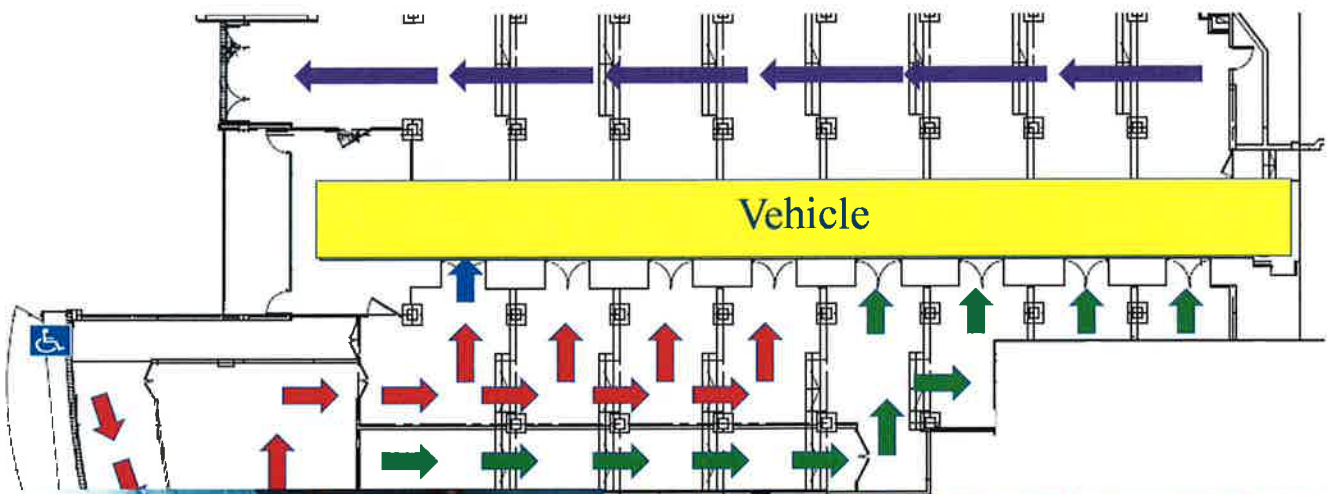


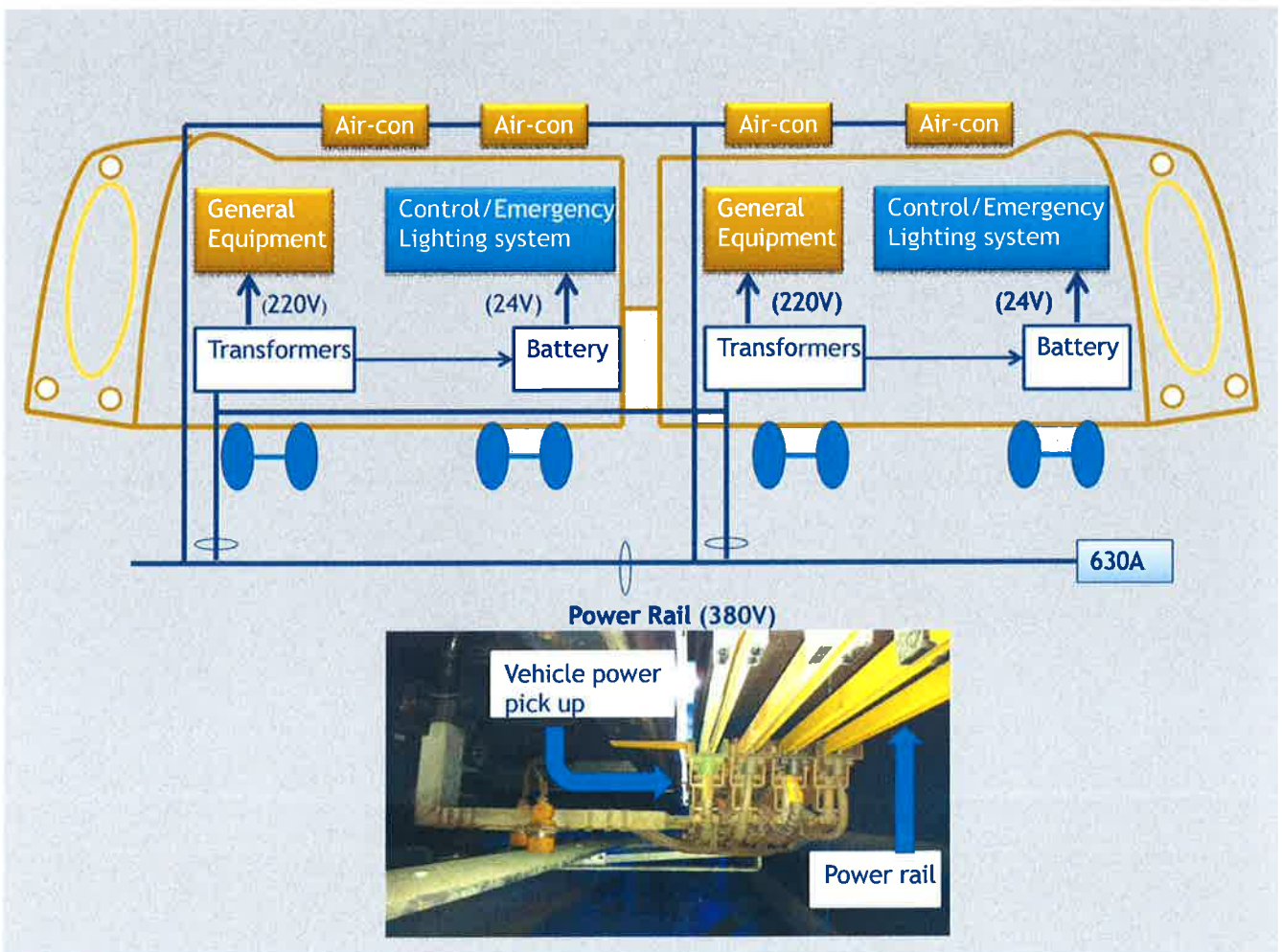
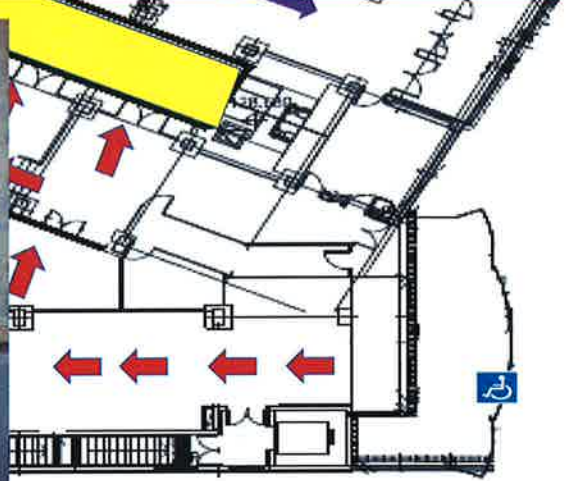
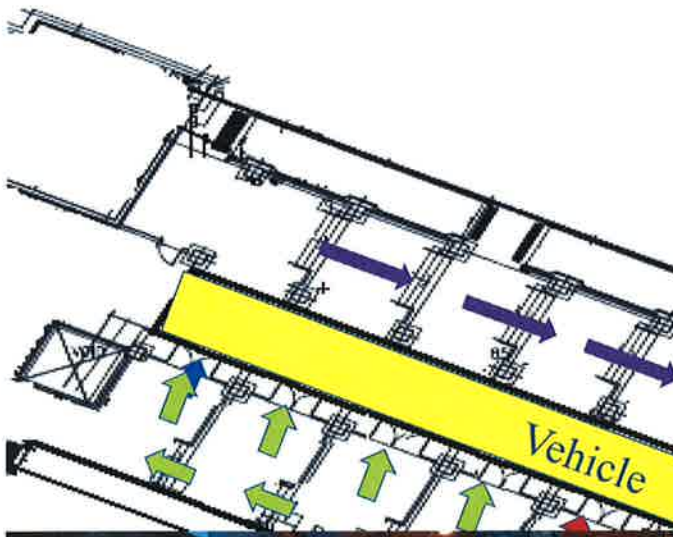
- Travel Time: 182sec
- Max capacity: 5,000 visitors per hour per direction
- Headway: 5 minutes
- Max. Speed: 10 m/s
- Distance between terminus 1300m approx.
- Gradient: 9%





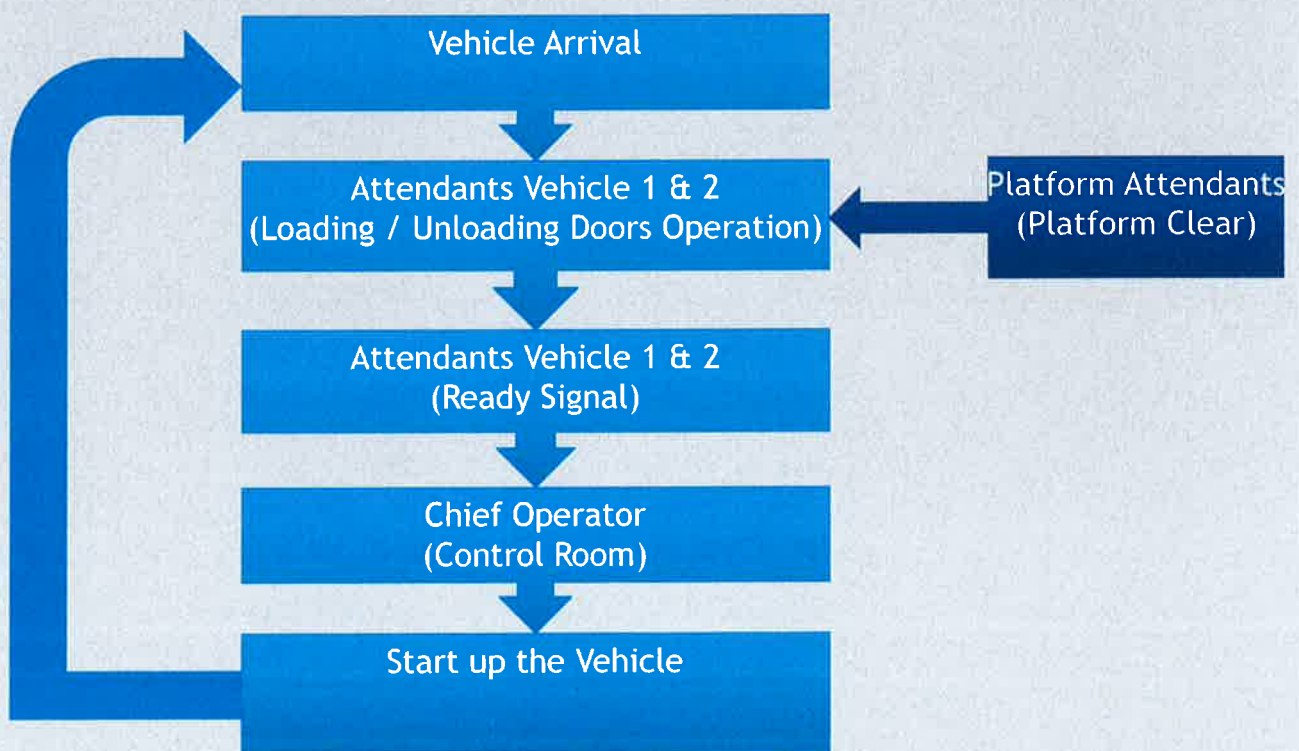




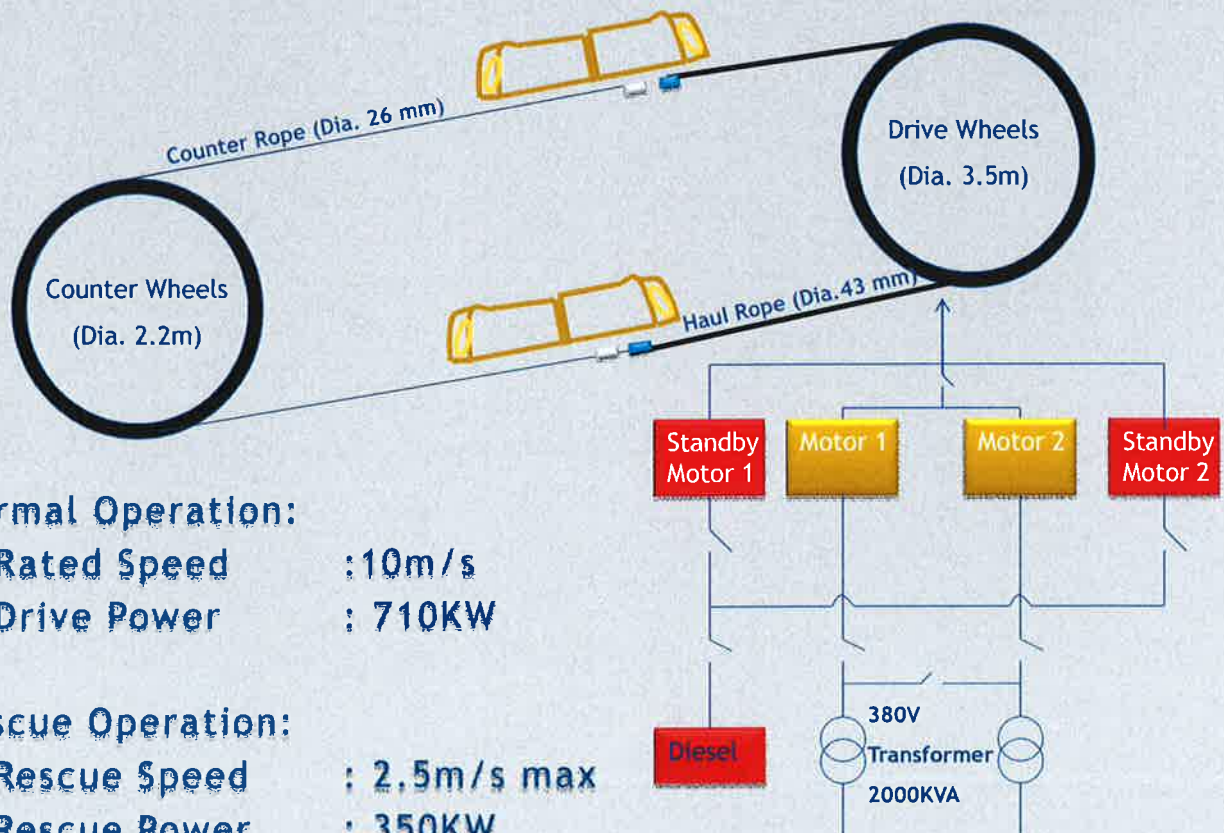
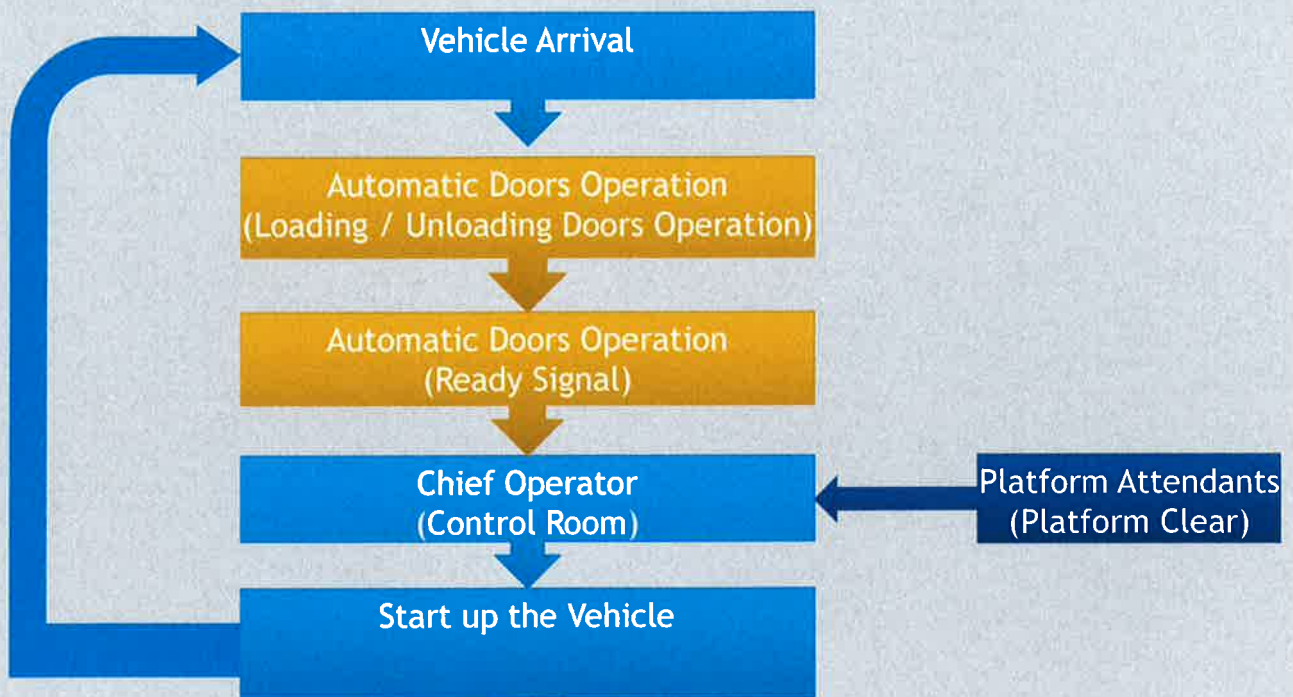




Manual Mode Operation



Auto Mode Operation



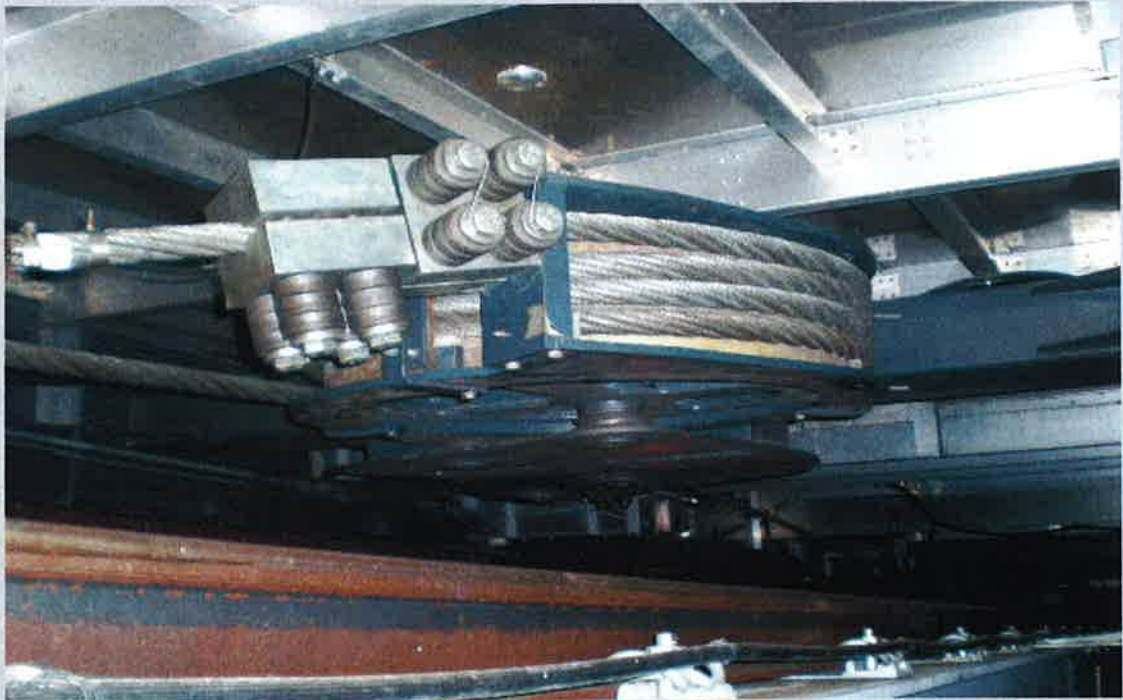
Drive Wheels



Counter Wheels



Ropes Connection



Motor Drives

Main Motor 1



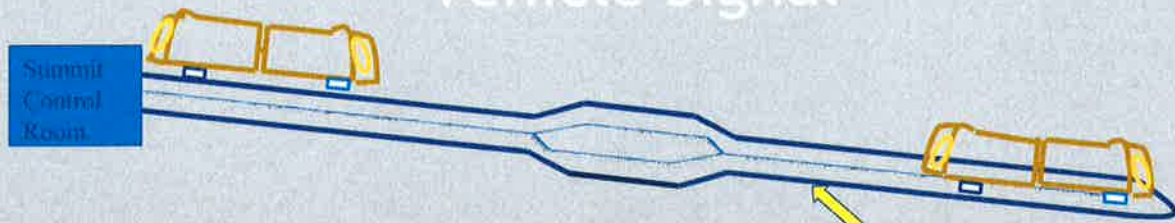
Main Motor 2



Diesel

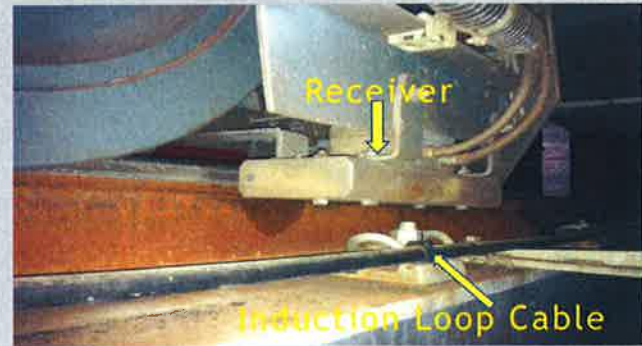


Vehicle Signal

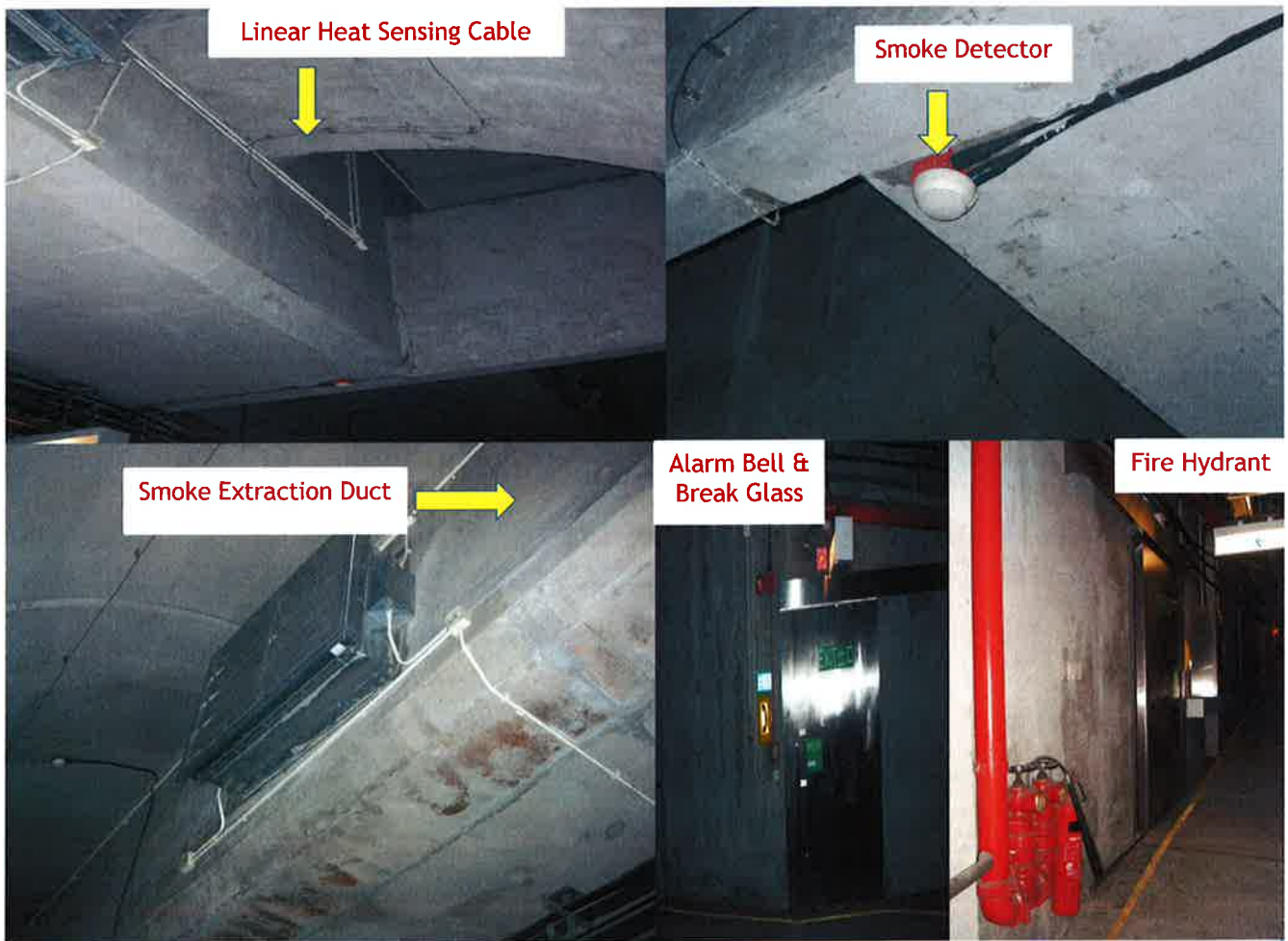
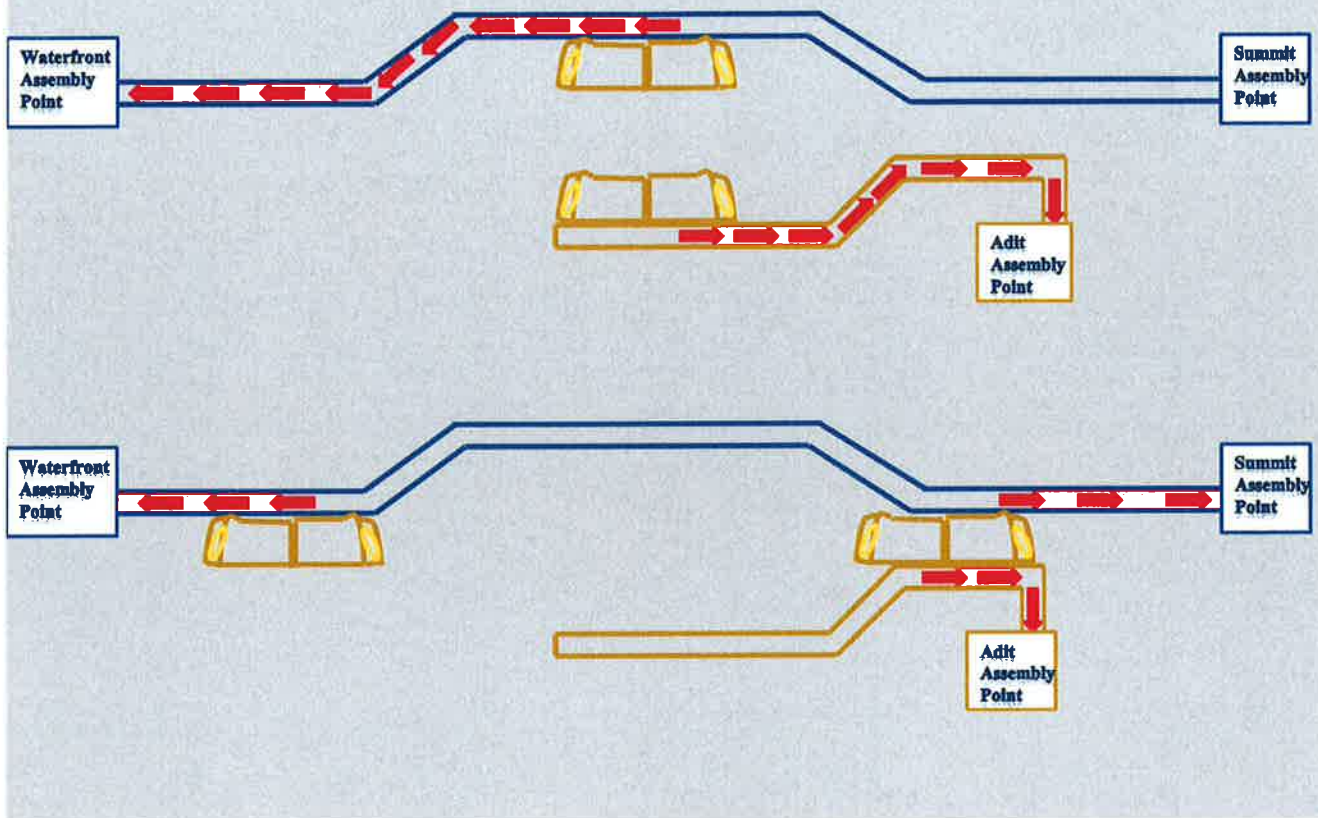


- Vehicle start / stop signal
- Brakes signal
- Position signal
- Overload signal
- PA / Emergency phone / CCTV signal
- Safety signal

Induction Loop Cable



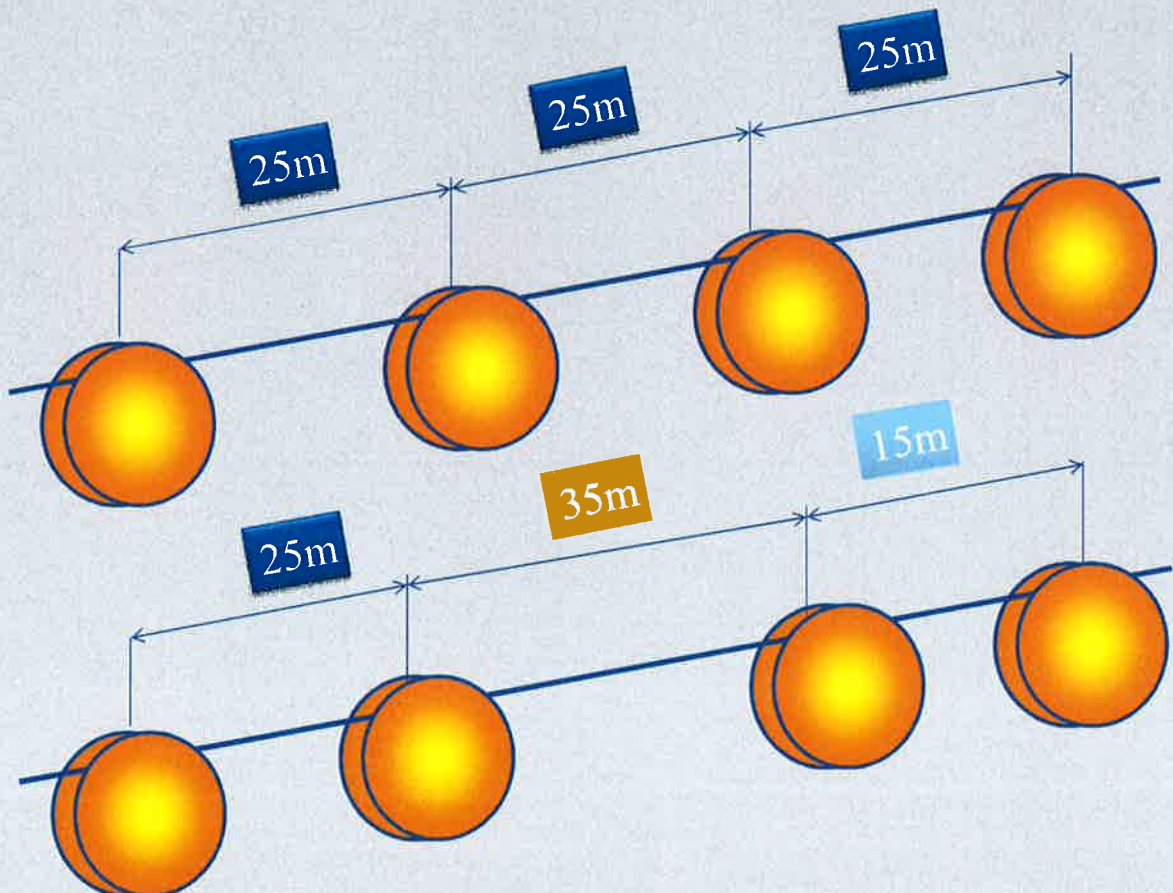
Evacuation Routes:



Problem: Rope Resonance



Haul rope vibrates laterally hitting line-sheave side flanges repeatedly



**Thank You
Q&A**

